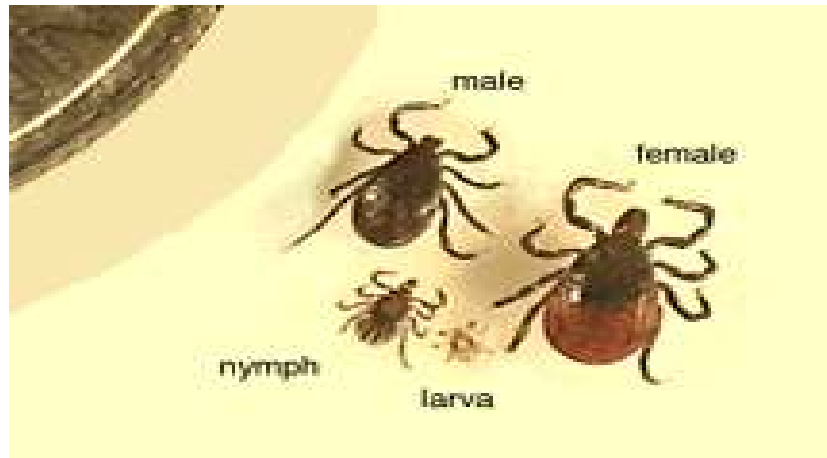


LYME TEST



- C6b.burgdorferi ELISA test (Immunitics)
- Confirmatory by PCR using 2 genetic markers
 - Sensitive at all stages of disease
- Sensitive for all symptom groups (Erythema Migrans, Arthritic, Neurological)
 - Ultra-specific
- Detects infection with all strains of Borrelia that cause Lyme disease including European strains B. garinii and B. afzelii
 - Speciation of positive Lyme by request (additional fees may apply)

AVAILABLE NOW • CALL FOR INFORMATION

775-351-1890

www.vipdx.com

Borrelia burgdorferi was originally thought to be the only species responsible for Lyme Disease. In the past ten years, different species of Borrelia, B. garinii and B. afzelii, were implicated in clinical cases of Lyme borreliosis in Europe. All three strains have been found in the US and Europe.

In 2002, over 20,000 new cases of Lyme disease were reported (CDC). Ticks transfer the spirochetes (*Borrelia burgdorferi*) to humans, white-tailed deer and other warm-blooded animals after a blood meal on an infected animal. It is thought that migratory birds have carried the different strains across the ocean and to different parts of the US.

Early stage Lyme disease is characterized by a distinctive rash at the site known as Erythema Migrans; it is seen in 60-80% of infected individuals and manifests 3 days to 1 month following the bite.

Stage two occurs days to weeks following infection when the spirochetes spread hematogenously to additional body tissues causing fatigue, chills, fever, headache, muscle and joint pain and swollen lymph nodes.

Stage three may not appear for weeks, months or even years after a tick bite. Stage three may manifest with episodes of migratory joint, tendon, muscle and bone pain, and may include Meningitis, Bell's palsy, and cardiac involvement. Arthritis is most likely to appear as brief bouts of pain and swelling in one or more large joints, especially the knees.

“C6 B. burgdorferi (Lyme) ELISA™ Kit based on the C6 peptide and the VlsE protein, offers a quantum leap forward in accuracy.” (Immunetics)

Specimen type will be serum and whole blood.

Call 775-351-1890 to order your free test kit.

A subset of Lyme disease patients also have **mycoplasmal infections** (Mycop. fermentans, Mycop. hominis, Mycop. pneumonia or Mycop. penetrans). In some cases multiple mycoplasmal infections can be present in Lyme disease. **VIP Dx** offers a mycoplasma panel for secondary testing.